

SANDWICH ASSEMBLY CONVEYOR



Grote's Sandwich Assembly Conveyor is an all stainless steel unit designed to convey sandwich products over any required length. The top belting is set to a nominal working height for accommodating either manual or automated sandwich assembly processes. The stainless steel top bed is formed with continuous channels along both sides of the conveyor, creating ideal locations for placing sandwich ingredients at each operator workstation. The belting is fully adjustable for tracking correction and is held under tension on the idle side. Simple manual release toggles on the idle side provide slack in the belting to allow easy access for cleaning and drying. Belt speed is electrically adjustable in either manual or automatic modes.



Optional Conveyor Belt Washer

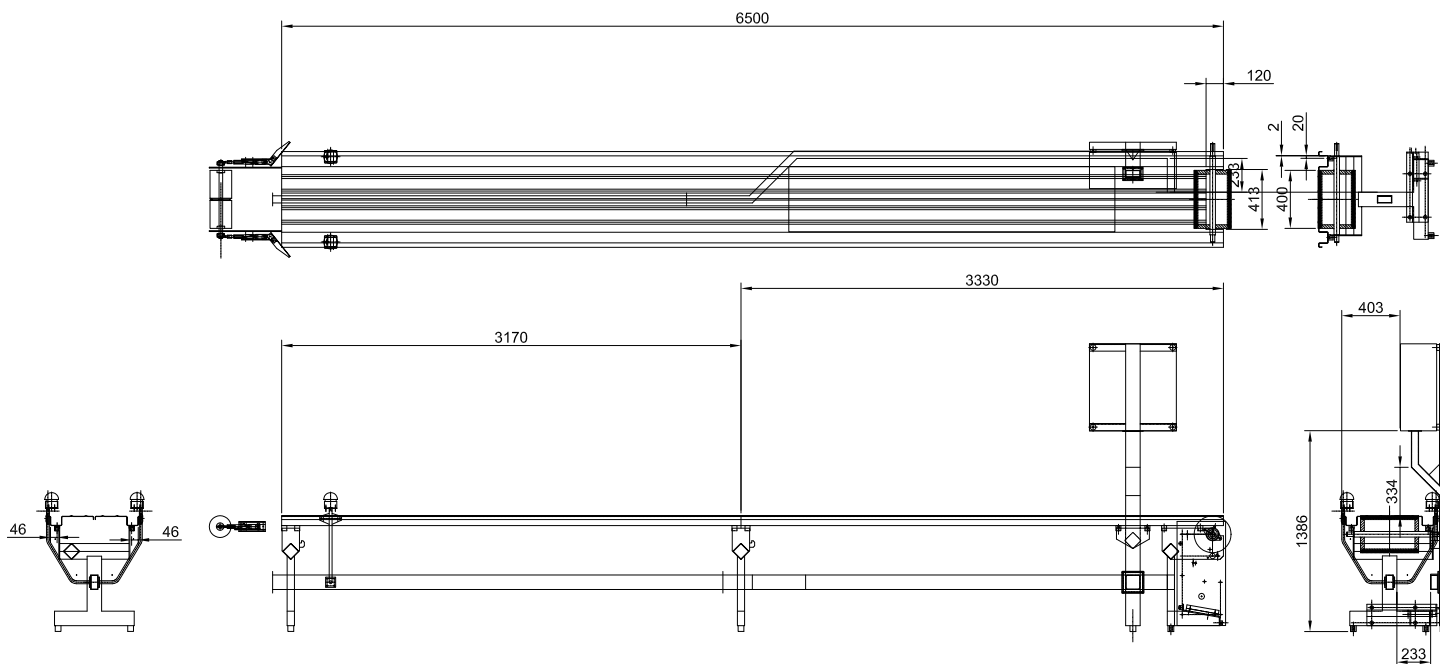
Grote's Sandwich Assembly Conveyor can be customized with several optional accessories, including a Belt Wash/Clean In Place (CIP) system. The CIP system provides for continuous washing and drying of the belt during production, and is easily removed for cleaning and sanitation. In addition, the conveyor can be equipped with self-locating racks which can be positioned anywhere along the length of the conveyor. These racks are capable of holding ingredient containers weighing up to 60 lbs, and can be positioned either alongside an operator workstation or cantilevered above the conveyor belt.



Optional Self Locating Ingredient Tray Racks



TOP VIEW



SIDE VIEW

Features

- Standard lengths - 4M, 6M and 8M; other lengths available upon request.
- Standard belt width: 400mm.
- Electrical: 200-575 VAC, 3 phase, 50/60 Hz.
- Stainless steel construction.
- Heavy duty food approved belting.
- Sealed stainless steel bearings and wash-down drive motor.
- Simple belt tensioning release mechanism.
- Lift-up idle side support to hold belt during cleaning.
- Removable solids collector bin and drum scraper at discharge end.
- Belt Washing/Clean In Place (CIP) system (optional).
- Self-locating ingredient tray racks (optional).

10/08

Corporate Office
 1160 Gahanna Parkway
 Columbus, OH 43230
 United States of America
 Tel.: 614-868-8414
 Fax: 614-863-1647
 E-mail: sales@grotecompany.com



Precision slicing & application systems

www.grotecompany.com

European Sales & Service
 Wrexham Technology Park
 Wrexham, North Wales LL137YP
 United Kingdom
 Tel.: 44 (0) 1978-362243
 Fax: 44 (0) 1978-362255
 E-mail: sales@intl.grotecompany.com