

# HIGH SPEED SLICER

Grote's High Speed Slicer is ideal for high speed bulk slicing and interval count applications. It is typically used on bacon processing lines, but it can be used for slicing a variety of other food products.

Slicing speed may be adjusted up to 400 strokes per minute, per lane. Product may be continuously loaded into the product holders while the machine is in operation. Sliced product is precisely applied onto conveyor belts, oven belts, or paper.

Operation and sanitation are simple. The user-friendly touch screen allows most functions to be changed in an instant with the touch of a finger. Parts can be easily removed to allow for thorough cleaning.

Both hydraulic and electric formats are available. In addition, a variety of slicing widths and lane configurations are available for your choosing.

The IT model offers individual thickness trays with individual thickness controls. Each tray can be manually adjusted to change the slice thickness range.

The IC model offers an interval count system. This allows variable group count for portioning. In addition, the IC model also includes individual thickness trays.



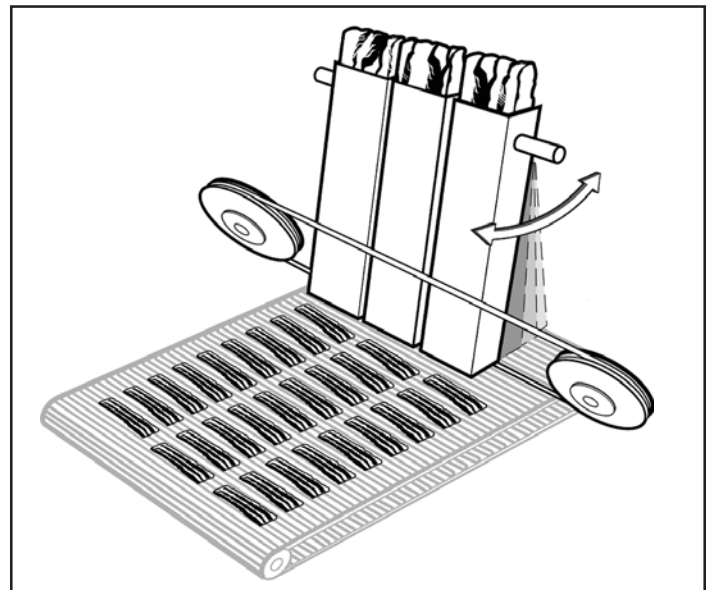
Count on Grote for *all* your slicing needs!



Model HS- 640-3ITE  
*Bulk slices at rates up to 400 strokes per minute, per lane.  
Ideal for bacon processing.*

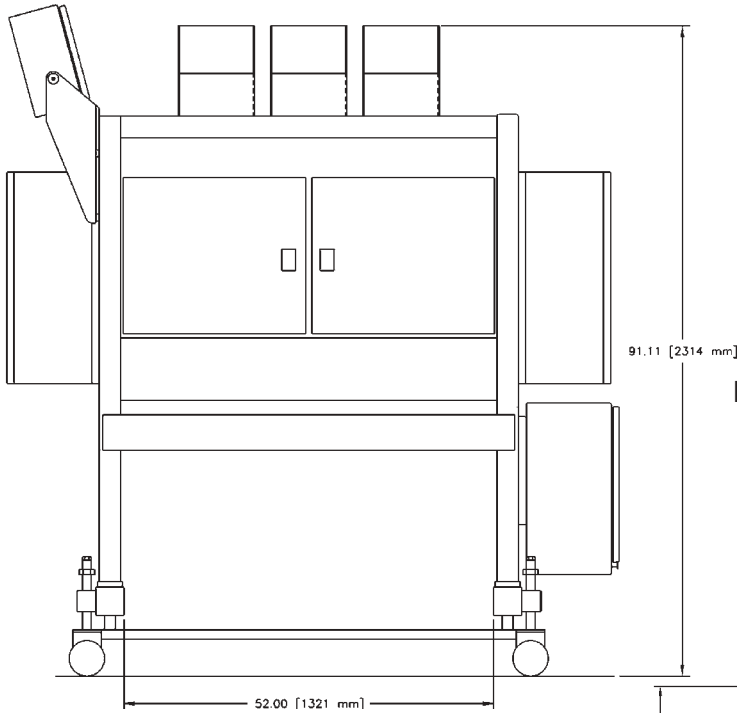
## AccuBand

The High Speed utilizes Grote's patented AccuBand® cutting system for optimal slice quality and product yield. AccuBand cuts with a 1/2" wide razor-sharp band blade running continuously between two pulleys. The blade cleanly and consistently cuts through the entire product log, including butt ends, to produce the highest yield of usable slices. Most boneless/non-frozen food products can be sliced. These disposable blades eliminate the need for sharpening and simplify the cleanup process.



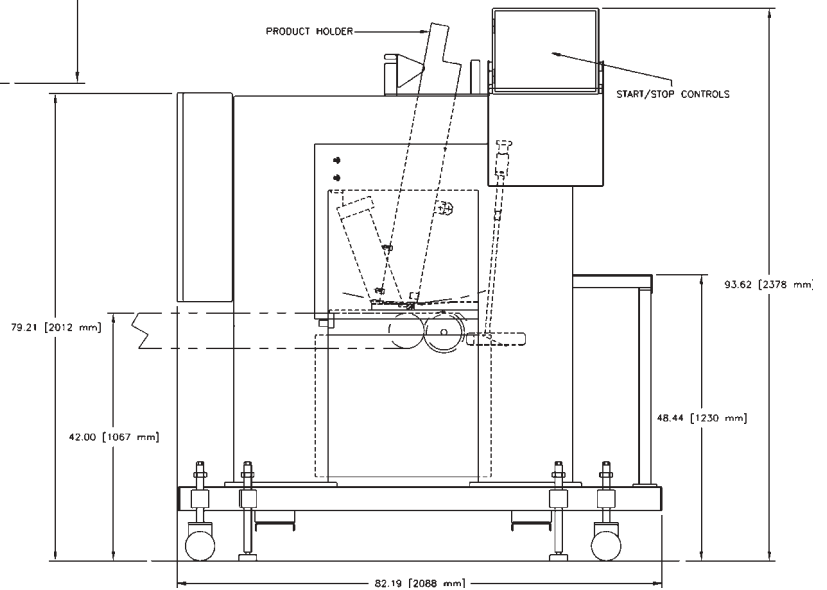
## Dimensional Drawings

### Model HS-640-3ITE



**FRONT VIEW**

**SIDE VIEW**



## Features

- Bulk slices up to 400 strokes per minute, per lane.
- Heavy-duty H-frame to fit over production conveyor.
- Hydraulic or electric drive.
- 42" tall pivot style product holders.
- Maximum product size: 6" in stroke direction.
- 0" to 1.25" slice thickness range on single tray models.
- Integrated loading platform with frame design.
- 0" to 0.188" slice thickness range on "IT" and "IC" models.
- Temperature/pressure compensated speed control (hyd.).
- Capable of following speed of production line.
- Electrical package: on/off bulk slice control, interval count.
- Digital speed indicator.
- Adjustable height casters.
- Electrical: 200-575 VAC, 50/60 Hz, 3 Phase.
- Utilizes AccuBand® cutting system.
- Continuous product loading during operation.
- Gravity feed product method.

#### **Corporate Office**

1160 Gahanna Parkway  
Columbus, OH 43230  
United States of America  
Tel.: 614-868-8414  
Fax: 614-863-1647

E-mail: sales@grotecompany.com



*Precision slicing & application systems*

[www.grotecompany.com](http://www.grotecompany.com)

#### **European Sales & Service**

Wrexham Technology Park  
Wrexham, North Wales LL137YP  
United Kingdom  
Tel.: 44 (0) 1978-362243  
Fax: 44 (0) 1978-362255

E-mail: sales@intl.grotecompany.com