

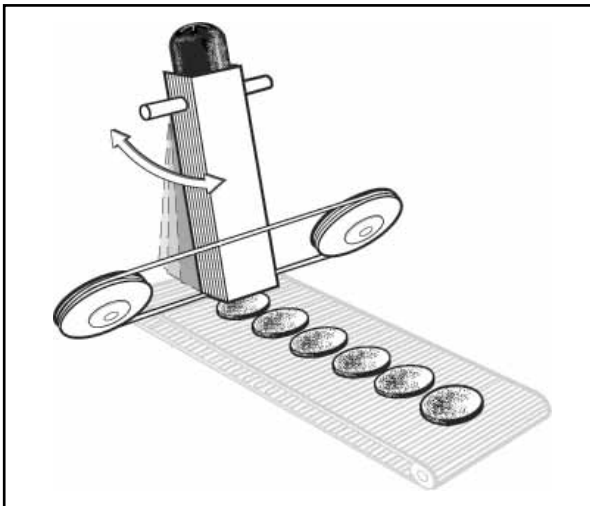
# SNP-505 SLICER



*Slices and applies products to moving targets at rates up to 120 strokes per minute (single lane only).*

## AccuBand

The SNP-505 utilizes Grote's patented AccuBand® cutting system for optimal slice quality and product yield. AccuBand cuts with a 1/2" wide razor-sharp band blade running continuously between two pulleys. The blade cleanly and consistently cuts through entire product logs, including butt ends, to produce the highest yield of usable slices. Most boneless/non-frozen products may be sliced. These disposable blades eliminate the need for sharpening and simplify the cleanup process.

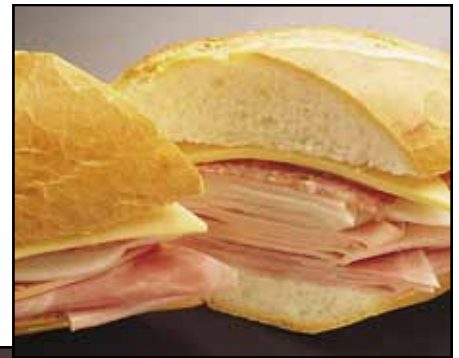


Grote's SNP-505 Slicer is ideal for single lane targeting applications, such as sandwich lines. It slices and applies product slices directly onto a moving target, such as a bun or tray, as it passes beneath.

Production rates are adjustable up to 120 strokes per minute. Product logs may be continuously loaded into the product holder while the machine is in operation.

With its cantilevered design, the SNP-505 is set directly over your production line. This design allows the slicing head to move to the desired height, and the frame can be reversed for left-hand or right-hand operation.

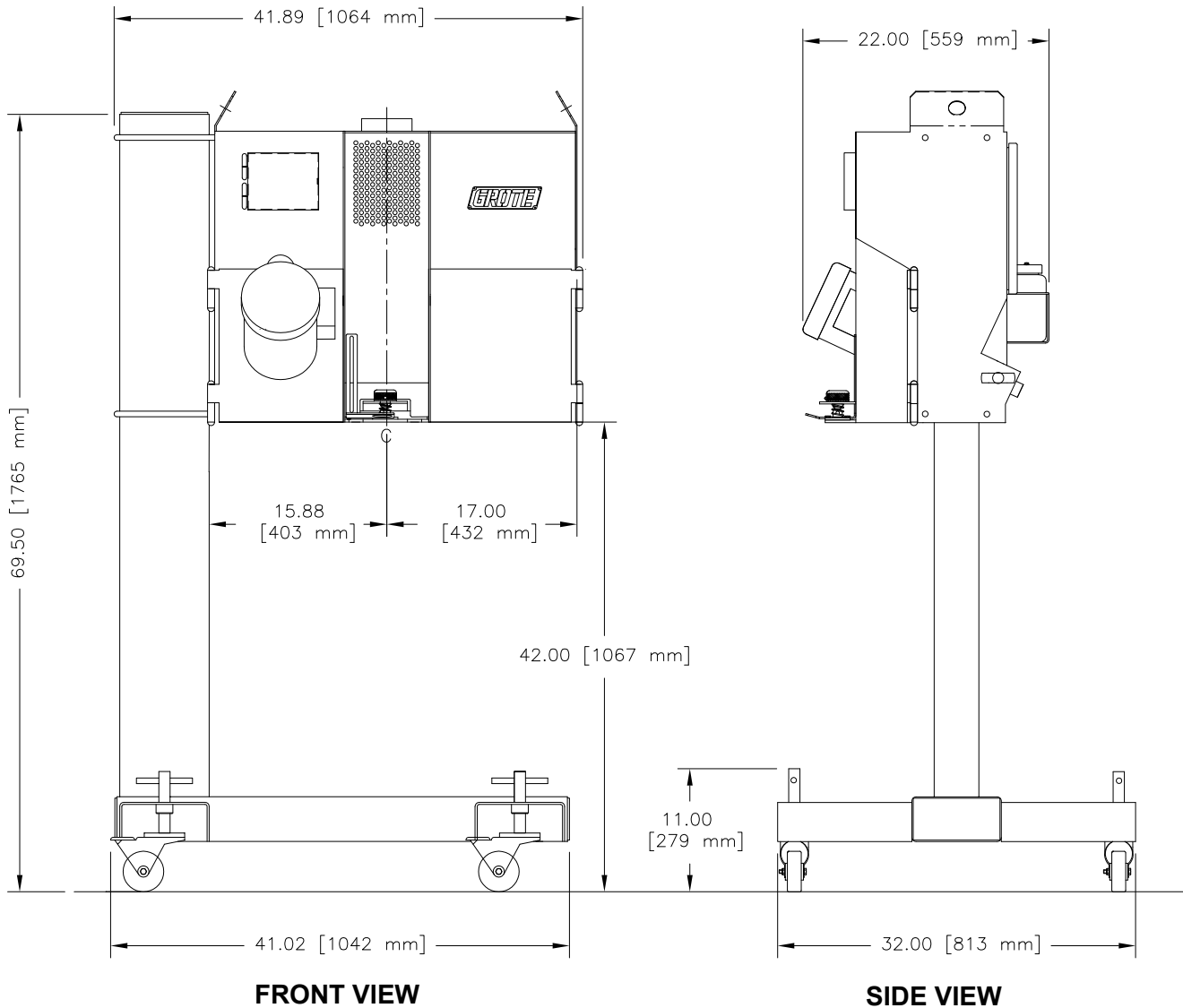
Most functions of the SNP-505 can be controlled with the user-friendly keypad. The keypad utilizes easily identifiable symbols to simplify the function selection process. Slicing speed, slicing mode, and blade lubrication can all be adjusted in an instant with the touch of a finger.



**GROTE**

**Count on Grote for *all* your slicing needs!**

## Dimensional Drawings



01.10

## Features

- Adjustable speed up to 120 strokes per minute
- Target and bulk slice modes
- 5" x 4.8" maximum product size
- 26" tall product holder
- Adjustable deposit height
- Variable slice thickness up to 3/8"
- Cantilevered frame with pedestal base
- Stainless steel construction
- All electric drive
- Emergency stop button
- Locking casters
- Blade motor: 1.5 H.P.
- Electrical requirements: 200 - 240 VAC, 50/60 Hz, 1 Phase
- Utilizes AccuBand® cutting system
- Continuous product loading during operation
- Gravity feed product method

### Corporate Office

1160 Gahanna Parkway  
Columbus, OH 43230  
United States of America  
Tel.: 614-868-8414  
Fax: 614-863-1647

E-mail: sales@grotecompany.com



*Precision slicing & application systems*

[www.grotecompany.com](http://www.grotecompany.com)

### European Sales & Service

Wrexham Technology Park  
Wrexham, North Wales LL137YP  
United Kingdom

Tel.: 44 (0) 1978-362243  
Fax: 44 (0) 1978-362255

E-mail: sales@intl.grotecompany.com