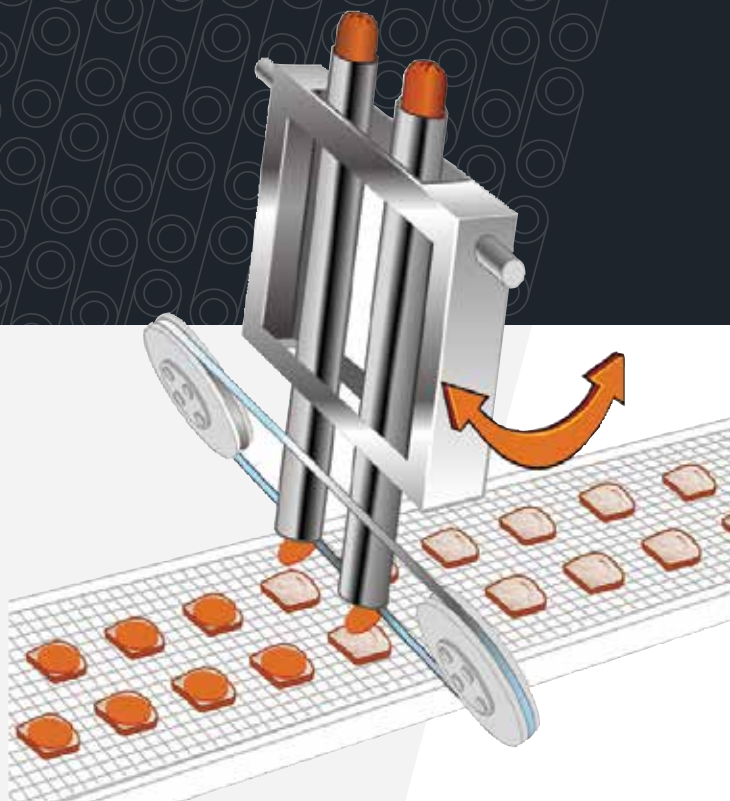
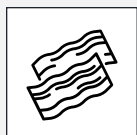


ACCUBAND BLADE SYSTEM

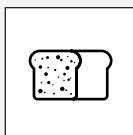
STRONG, SHARP BAND BLADES GIVE YOU
THE PERFECT SLICE, EVERY TIME



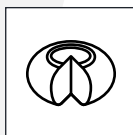
COMMON FOOD APPLICATIONS



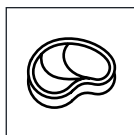
Bacon



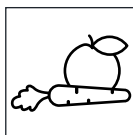
Bread



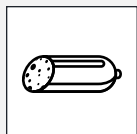
Cheese



Fresh Meats



Fresh Produce



Lunch Meats



Pizza



Sandwiches

- Razor sharp blades with hardened steel cutting edges provide optimal slice quality, consistency and yield
- Proprietary beveled edges eliminate chipping and extend blade life
- Disposable blades eliminate resharpening and simplify clean-up
- Most blades in stock and shipped same day



ACCUBAND BLADE SYSTEM

SPECIFICATIONS

Blade width: .5" (12.7 mm)

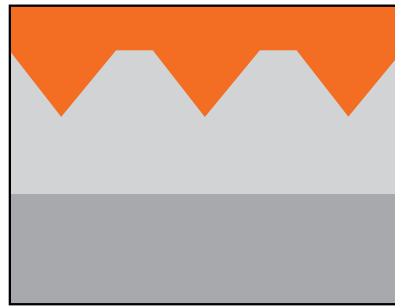
Material: Carbon steel (standard) or stainless steel (optional)

FEATURES/PARTS

- Band blade and two pulley system
- 6 month warranty on all blades, blade guides and replacement parts



Knife



V-Tooth



Modified V-Tooth



Sabre Tooth

This drawing contains confidential information is the exclusive property of the J.E. Grote Co. Neither this document, nor its contents, are to be used, reproduced or disclosed in whole or in part without the express written permission of the J.E. Grote Co. Copyright 2017, J.E. Grote Company, Inc.

E 10.17v5

CONTACT US

Grote Company is proud to provide top quality equipment, exceptional service and peace of mind worldwide. Contact us for more information or to schedule a demo of our slicing equipment with your product in your exact operating conditions in our Demo Facility.



To feed our growing world - Together

sales@grotecompany.com
grotecompany.com